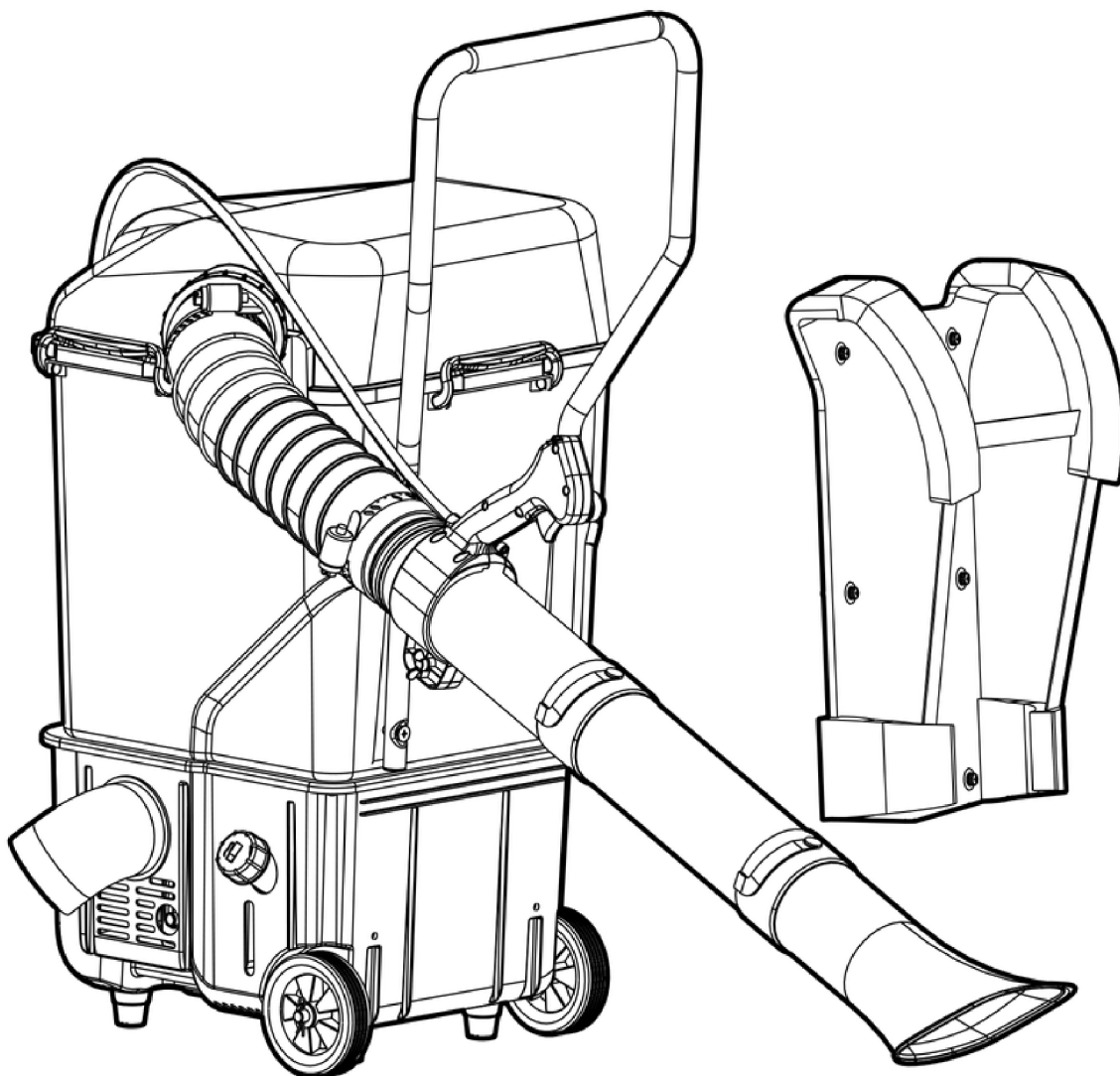




Backpack/Trolley Trash Vac User Manual



Please read the user manual before use.

Contents

SAFETY PRECAUTIONS

COMPONENTS

INSTALLATION INSTRUCTIONS

OPERATIONAL INSTRUCTIONS

STARTUP INSTRUCTIONS

MACHINE PARAMETERS

TROUBLESHOOTING

MAINTENANCE

TRANSPORTATION & STORAGE

SAFETY PRECAUTIONS



1. To ensure proper and safe operation, users must read, understand, and follow this user manual to familiarize themselves with the operation of the Trash Vac. Insufficient understanding may result in dangerous situations due to improper operation, posing risks to oneself and others.
2. It is recommended to entrust the operation of the Trash Vac only to experienced personnel.
3. When handing over the Trash Vac, it is essential to provide the user manual at the same time.
4. Children and individuals under the age of 18 are not allowed to operate the Trash Vac. However, individuals over the age of 16 may use the Trash Vac under the direct supervision of qualified training personnel.
5. Extreme caution must be exercised when using the Trash Vac.
6. Only operate the Trash Vac when in good physical condition.
7. All tasks should be carried out diligently and cautiously. Users are responsible for the safety of others.
8. Do not use the Trash Vac while under the influence of alcohol or medication.
9. Do not use the Trash Vac when feeling fatigued.
10. Please keep the user manual properly stored for future reference.
11. Do not modify the equipment, as it may lead to accidents or personal injuries.



Read the instruction manual before use.



Caution: The muffler is hot. Avoid contact to prevent burns.



Prevent fire. Do not use in areas with flammable materials.



Engine emits carbon monoxide gas. Do not operate the engine in enclosed areas.



Keep bystanders away.



Do not expose to wet environments.

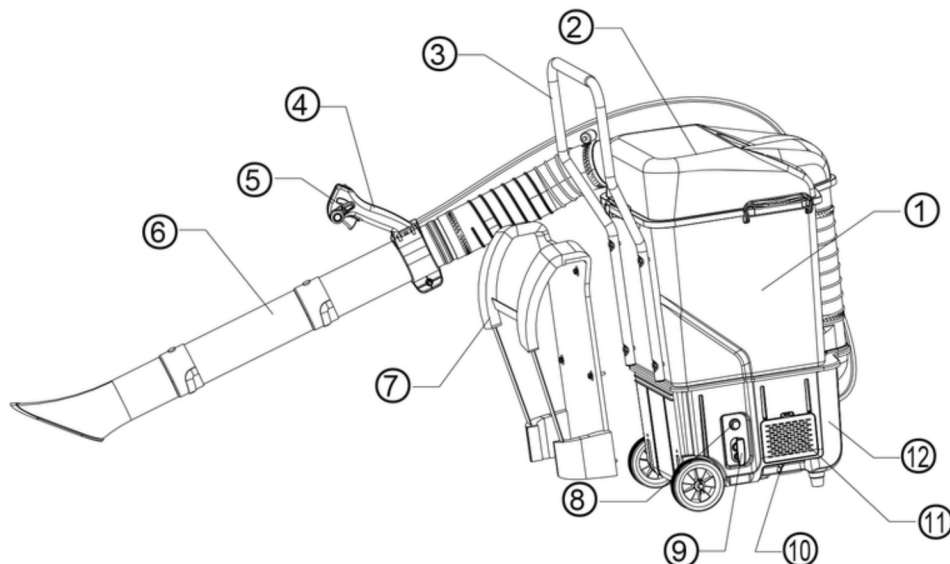


Please wear ear and eye protection.



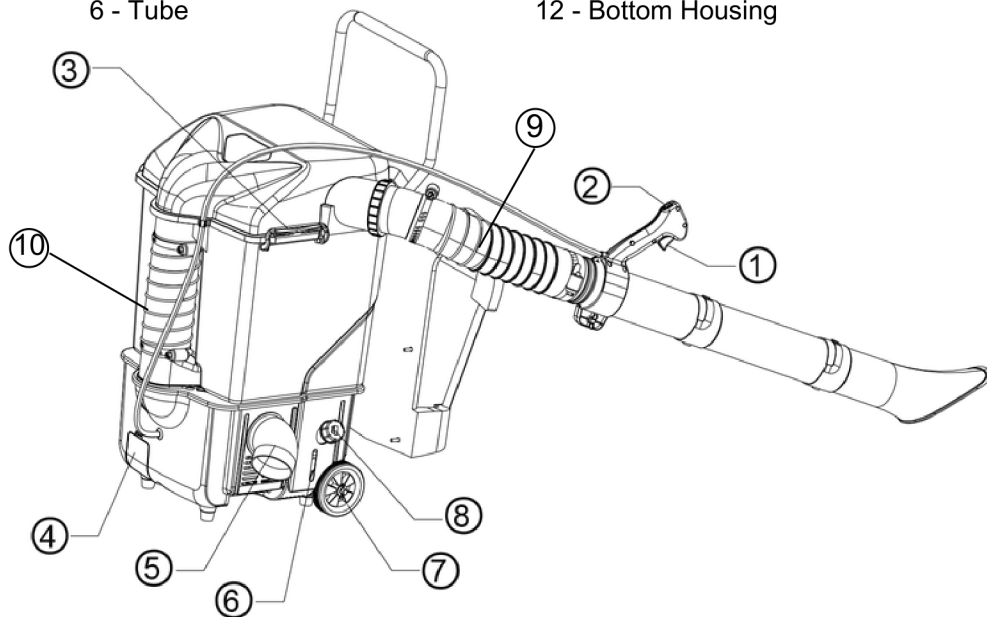
Do not aim the air outlet at people, as it may contain dust and small particles.

COMPONENTS



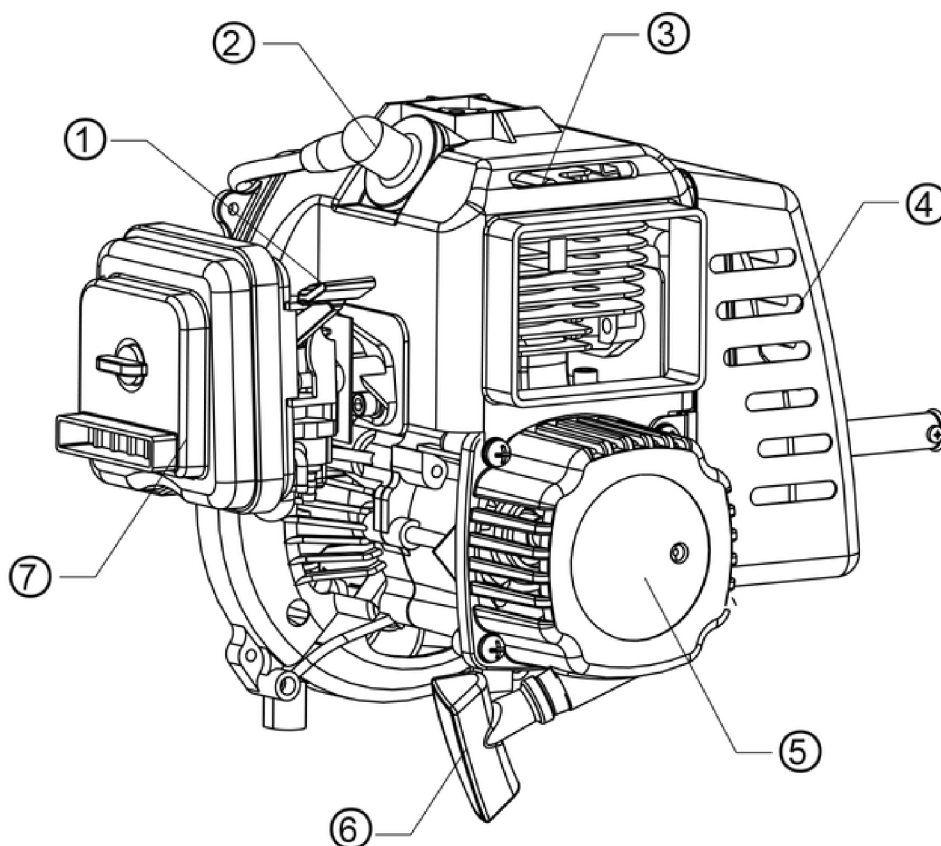
- 1 - Main Body
- 2 - Top Cover
- 3 - Handle
- 4 - Operation Handle
- 5 - Cruise Control Level
- 6 - Tube

- 7 - Backpack Harness
- 8 - Primer Bulb
- 9 - Starting Handle
- 10 - Choke Lever
- 11 - Carb Cover
- 12 - Bottom Housing



- 1 - Throttle Trigger
- 2 - Kill Switch
- 3 - Starting Handle
- 4 - Spark Plug Cover
- 5 - Air Outlet Elbow

- 6 - Gas Level Observation Window
- 7 - Wheel
- 8 - Gas Tank
- 9 - Long Hose (ID 3.93 in, length 31.5 in)
- 10 - Short Hose (ID 3.93 in, length 10.6 in)



- 1 - Throttle Lever
- 2 - Spark Plug Cap
- 3 - Cylinder Cover
- 4 - Muffler

- 5 - Starting Pull Knob
- 6 - Starting Handle
- 7 - Air Filter Assembly



CAUTION: The muffler is hot. Avoid contact to prevent burns.



CAUTION: Engine emits carbon monoxide gas. Do not operate the engine in enclosed areas.



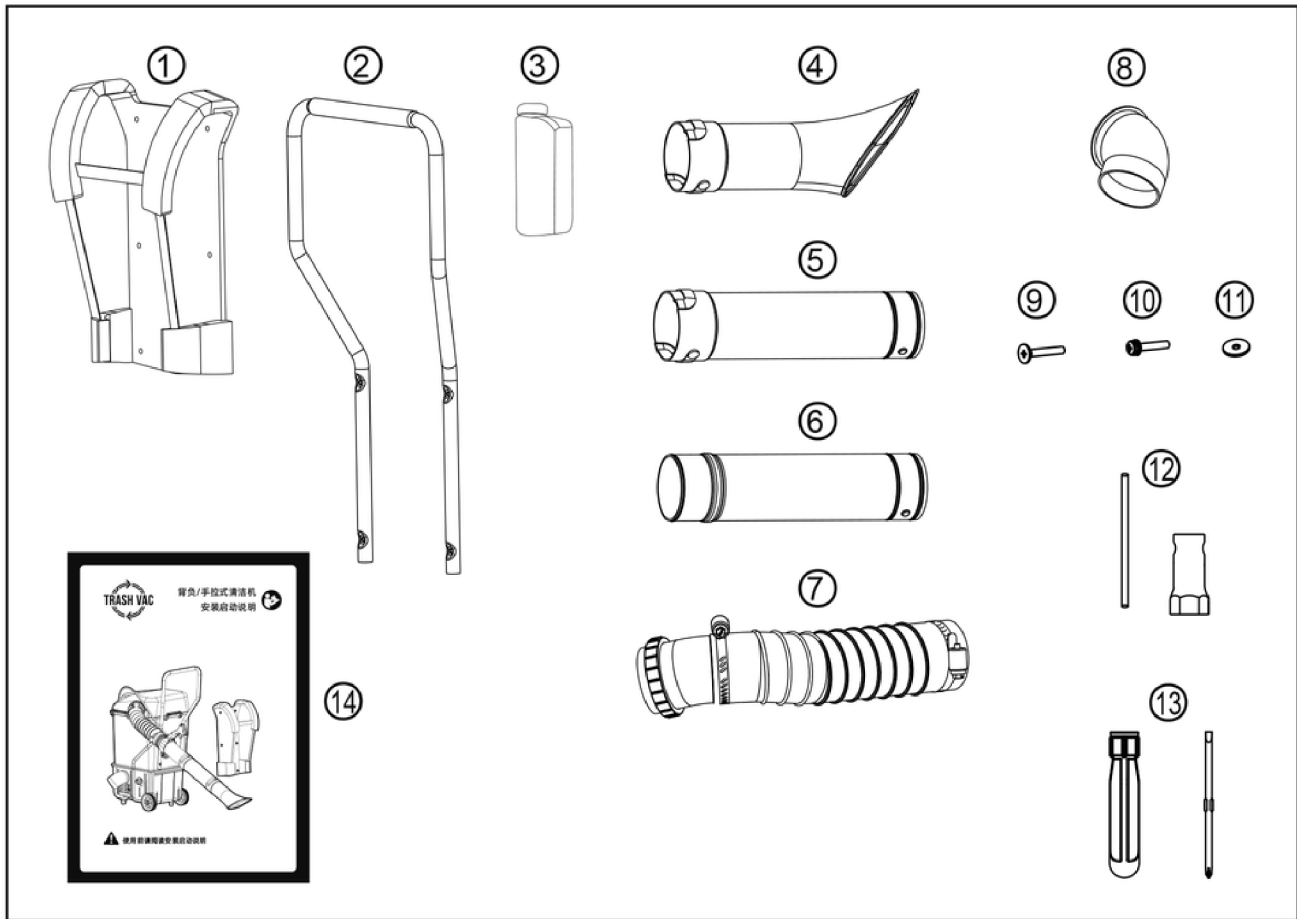
CAUTION: Do not expose to wet environments.



ACCESSORIES LIST

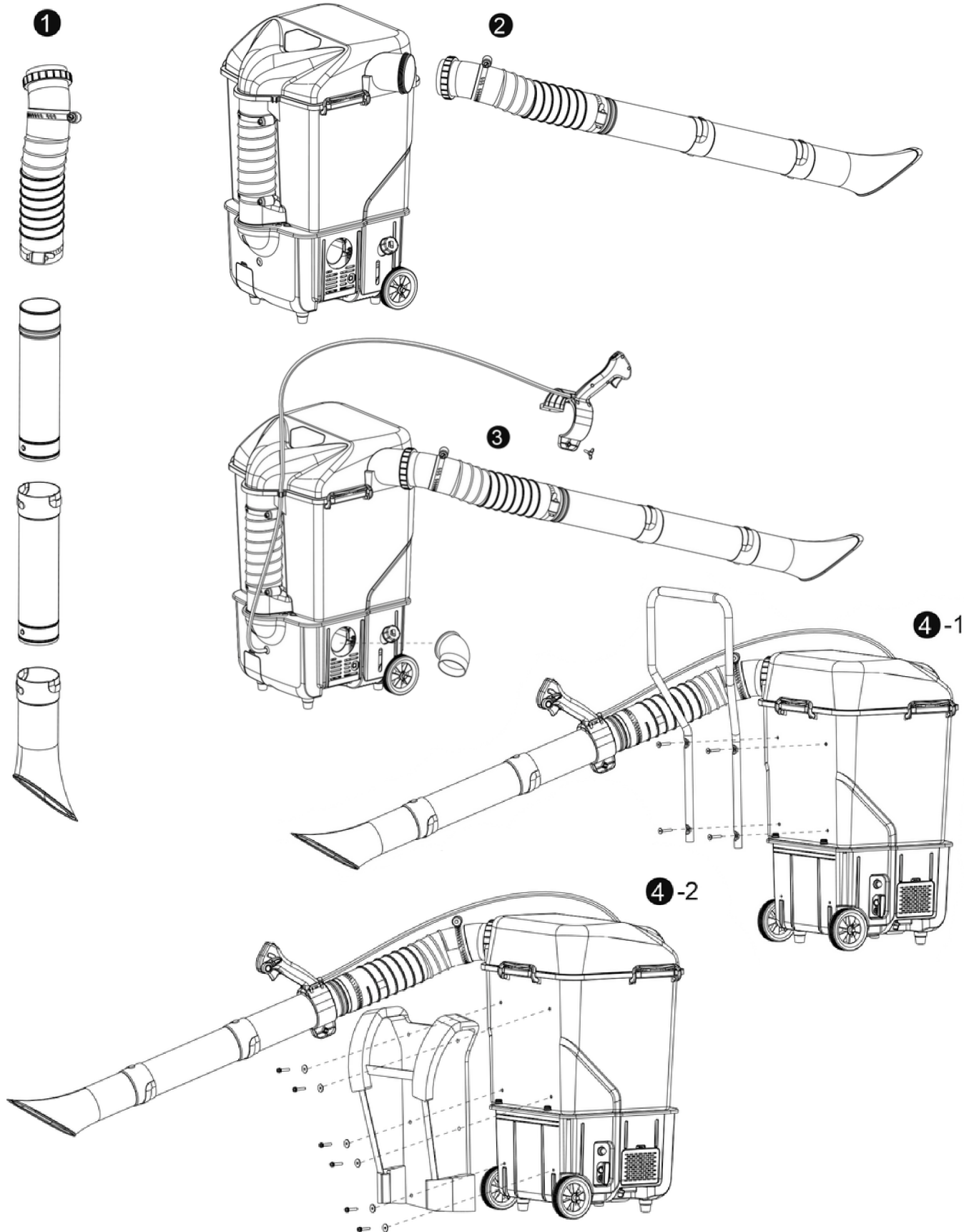
After opening the packing box, check if any parts are damaged or missing. If there are any damages or missing parts, please notify your retailer or dealer immediately for assistance.

ACCESSORIES LIST & DIAGRAM



1. Shoulder Strap
2. Handle Assembly (with foam tube and plug installed)
3. Fuel Mixing Bottle
4. Inlet Tube
5. Extended Tube 1
6. Extended Tube 2
7. Corrugated Hose Assembly (Tube Elbow, Hose: inner diameter 3.93 in, length 31.5 in, and two clamps installed)
8. Outlet Bend Tube
9. Cross Countersunk Screws (4 pieces + 2 spares)
10. Cross Pan Head and Combination Bolts (6 pieces + 2 spares)
11. Large Washers (6 pieces + 2 spares)
12. Spark Plug Socket Wrench and Bar
13. Double-ended screwdriver
14. Instruction Manual

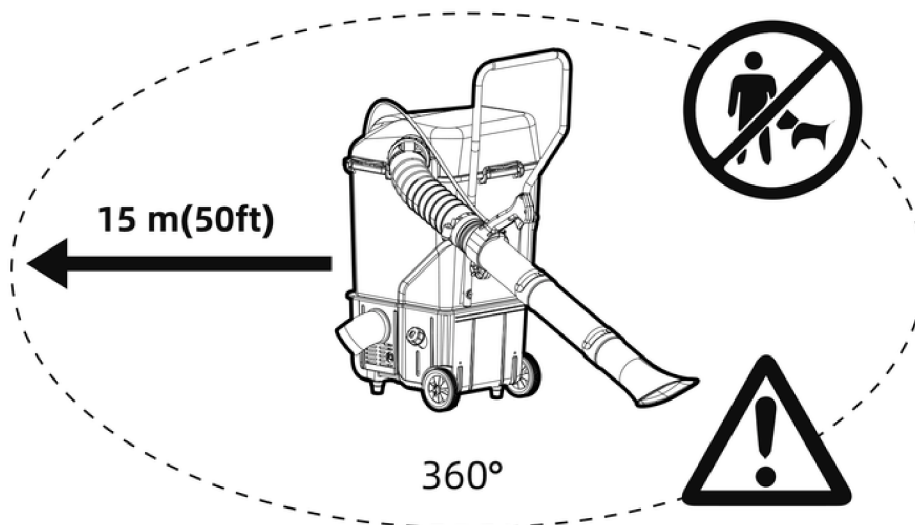
INSTALLATION INSTRUCTIONS



OPERATIONAL INSTRUCTIONS



Ensure that no children or other individuals are within a 15 - meter working range and be mindful of any nearby animals.



Do not aim the air outlet at people, as it may contain dust and small partials.



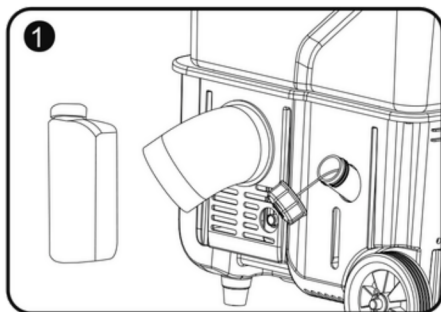
Keep bystanders away.

FUEL MIXTURE INSTRUCTIONS

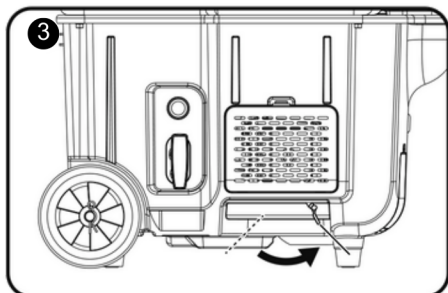
1. Add half of the required amount of gasoline into the designated fuel container.
2. Add an appropriate amount of 2-stroke engine oil to the gasoline.
3. Cover the container tightly and shake it vigorously to ensure a thorough mixture of oil and gasoline.
4. Add the remaining gasoline, cover the container tightly, and mix it thoroughly again.

Fuel Mixing Ratio Chart (50:1)			
Imperial		Metric	
Gasoline (Gallons)	Oil (Ounces)	Gasoline (Liters)	Oil (Milliliters)
1	2.6	5	100
2	5.2	10	200
3	13	25	500

STARTUP INSTRUCTIONS

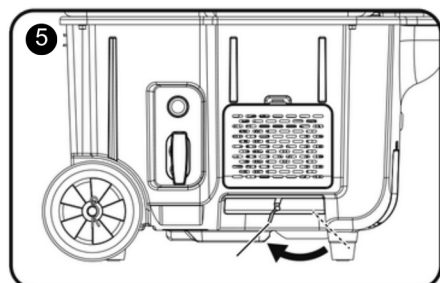


Fill up with a gasoline two-stroke oil mixture in a ratio of 50:1.

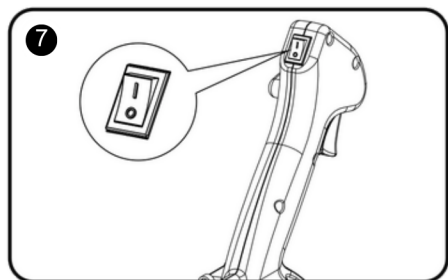


Close the throttle valve.

Close the choke valve to the right (no need to close it when the engine is hot).

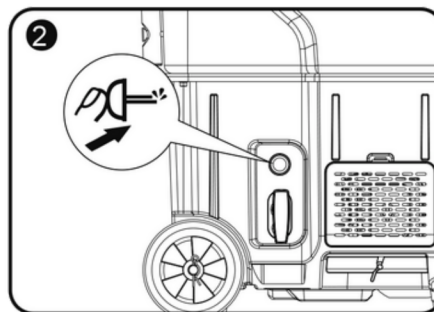


Open the choke valve. After the engine starts, open the choke valve to the left.

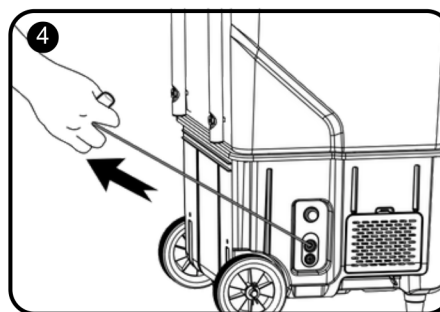


Shutting down the machine:

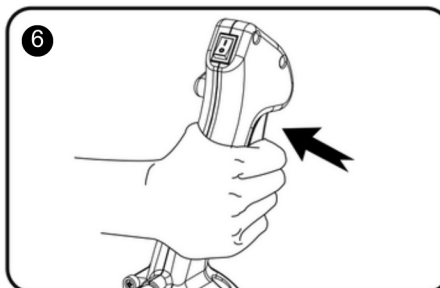
1. When shutting down, release the throttle trigger to allow the machine to idle
2. Press and hold the ignition switch "O" until the engine shuts off, then release it.



Press the Primer Bulb. Before starting a new machine, repeatedly press the transparent Primer Bulb until it is full of oil.



Pull the starter rope.



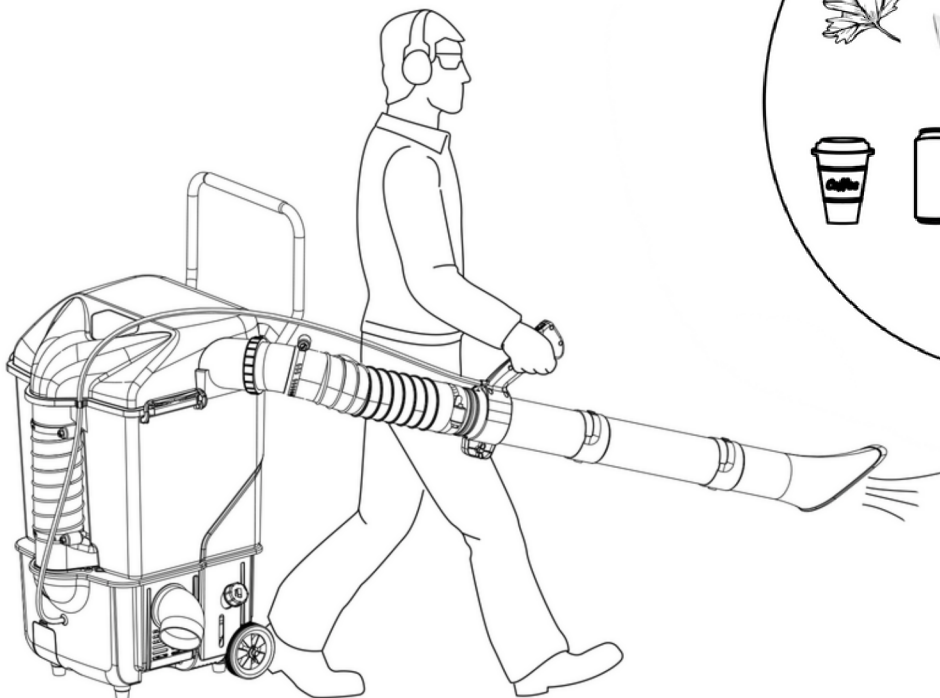
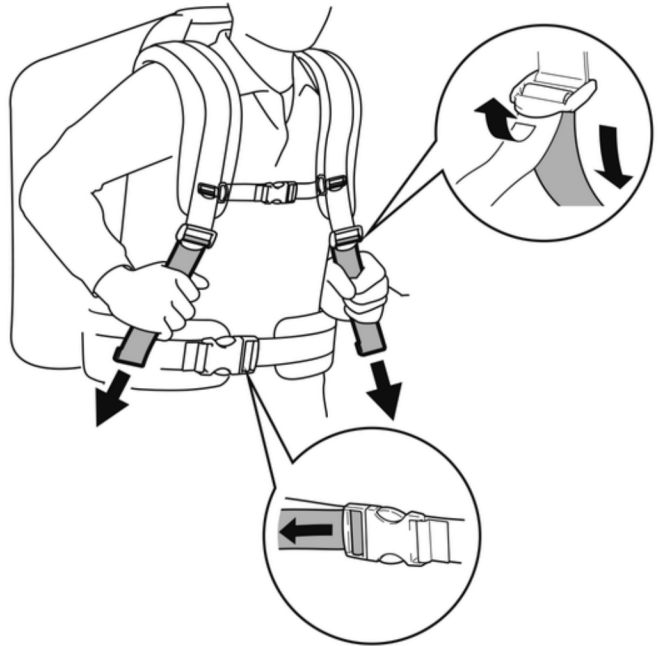
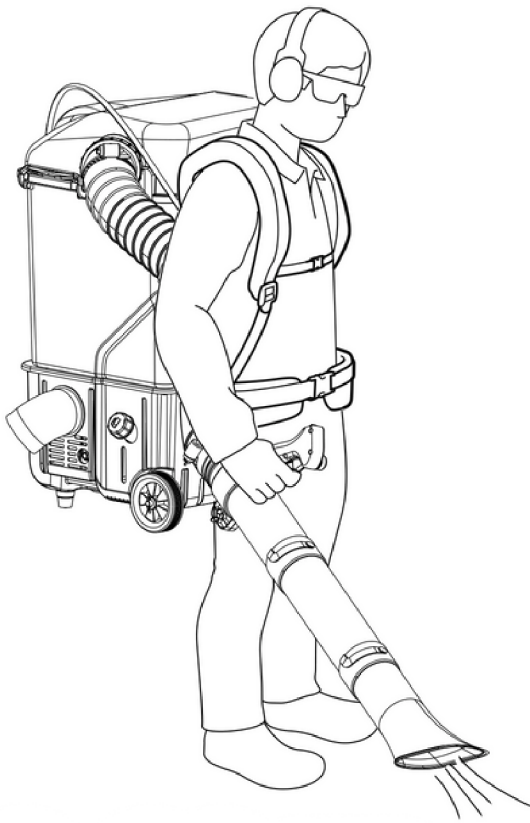
Throttle Control

Press the throttle trigger to increase the engine speed and start operation.

Cautions:

1. After starting the gasoline engine, let it idle for a while to warm up the machine.
2. After the gasoline engine has warmed up, adjust the throttle according to the actual needs.
3. The gasoline engine has poor lubrication right after starting, so avoid accelerating rapidly.
4. Avoid running the gasoline engine at high speeds for an extended periods of time, as it may cause engine malfunctions and reduce the lifespan of the machine. Set the engine to high speeds only when necessary or collecting difficult trash.

STARTUP INSTRUCTIONS



MACHINE PARAMETERS



Item	Unit	Parameter
Product Model	N/A	HSJ50
Max Air Speed at Outlet	m/s	45
Max Air Volume at Outlet	m ³ /h/rpm	620/6700
Outlet Pressure	Pa	1400
Rated Vacuum Pressure	kPa	0.5
Max Collection Drum Capacity	L	42
Product Net Weight	lbs	42
Outer Package Dimensions	in	21.65*21.25*33.66
Engine Model	N/A	JF1E44FB
Engine Emission	cc	52
Bore * Stroke	mm/mm	44/34
Rated Power/Speed	kW/rpm	1.2/6500
Max Torque/Speed	N.m/rpm	1.9/5500
Ignition System	N/A	TCI
Ignition System	N/A	Manual pull and automatic recoil start
Fuel Tank Capacity	L	1.2

TROUBLESHOOTING TRASH VAC



Fault Type	Check	Fault Analysis	Troubleshooting
Difficult to Start/No Start	Check fuel level in tank	No fuel	Add fuel
	Check fuel level in carburetor	Not pressing the primer bulb, resulting in no fuel in the carburetor.	Press the primer bulb until it's full
		Fuel line from tank to carburetor is blocked	Check and connect fuel line properly
		Fuel filter in tank is clogged	Clean and reinstall after cleaning
	Check spark plug for spark	Loose spark plug cap	Reinstall spark plug cap
		Spark plug malfunction	Clean spark plug, check and adjust the spark plug gap to 0.6-0.8mm or replace.
	The throttle valve	The throttle valve was not closed during cold engine start	Move the throttle lever to the closed position, start the engine, and then open the throttle valve.
The engine runs but stalls easily or cannot accelerate	Check air filter	Dirty filter element	Clean or replace
	Check fuel filter	Clogged due to dirty fuel	Clean or replace, and use fresh fuel
	Spark plug malfunction	Dirty or worn spark plug	Clean, adjust, or replace
	Carburetor throttle wire loose	Vibration caused throttle wire to loosen	Readjust and securely fasten wire
The engine runs, but the suction power is weak when vacuuming debris	Check if the top cover is securely fastened or has air leaks	Weak suction due to air leaks in suction passage	Re-tighten the top cover
	Check if the tubes are securely fastened or has air leaks	Weak suction due to air leaks in suction passage	Re-tighten the corrugated hose
	Check if the suction hose is securely fastened or has air leaks	Weak suction due to air leaks in suction passage	Re-tighten the tubes
	Check if there is large debris blocking the feed port	The suction passage is blocked due to the large volume of debris	1. Lift the suction hose to facilitate debris entering the collection barrel 2. Remove the top cover and clear the



Warning: Improper use of moving parts may cause serious injury to limbs or fingers. Keep hands, clothing, and loose items away from moving parts. Before removing obstacles, clearing debris, or performing equipment maintenance, the engine must be stopped, spark plug cap disconnected, and ensure all moving parts have come to a complete stop.

Prior to maintenance, allow the equipment to cool down completely and wear gloves to protect fingers from scratches on sharp edges and burns from hot components. To ensure hours of trouble-free service from your purchased Trash Vac, you can take the equipment to an authorized service center for regular maintenance. If you prefer to perform routine maintenance yourself, you can refer to the table below for simple maintenance tasks.

Common tools needed for routine maintenance are provided in the accessories of the cleaning machine you purchased, making your maintenance work easier.

MAINTENANCE SCHEDULE

Item	Maintain Process	Before each use	Every 3 months or 20 hours	Every year or 100 hours
Air Filter	Check/Clean	● ★	★	
Fuel Filter	Check/Clean/Replace		● ★ ✕	● ★ ✕
Gas Tank Washer	Check/Replace		● ★	
Spark Plug	Check/Clean/Replace		● ★	
Exhaust Air System	Check/Clean		● ✕	
Fastener	Check/Fasten/Replace	● ★		
Fuel Pipeline	Check/Replace	Before refueling each time, check for any fuel leaks in the fuel pipelines, and replace them if necessary.		
Hose	Check/Replace	Regularly inspect the hoses and replace them promptly if there is any damage.		

● Inspection Items

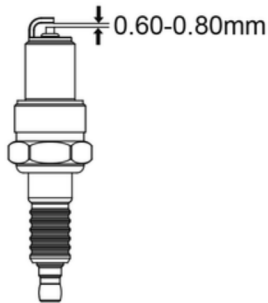
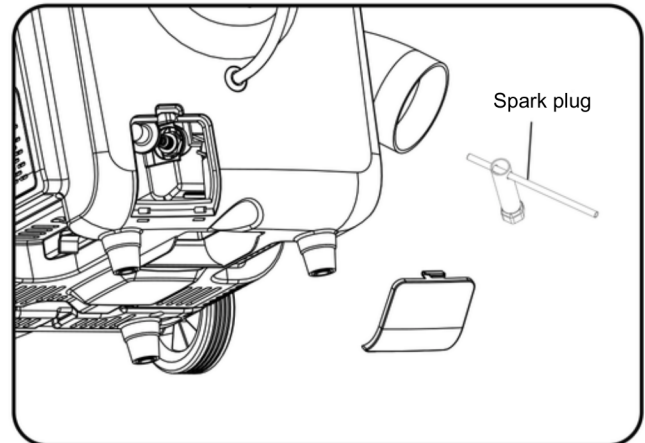
★ Replace any damaged or worn parts discovered during inspection

✕ Unless the user has the appropriate tools and repair skills, this task should be preformed by a professional repair shop



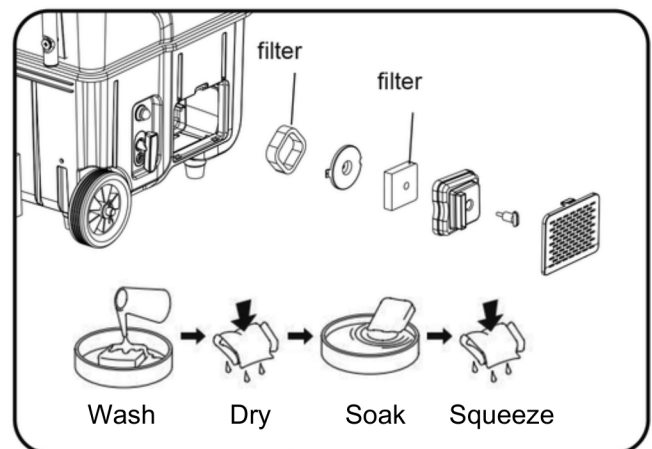
Spark Plug Maintenance

1. Remove the spark plug cap and unscrew the spark plug.
2. Clean any carbon deposits.
3. Measure the spark plug gap. The correct gap should be 0.60-0.80mm.
4. Install the spark plug and spark plug cap. Use the provided spark plug socket to tighten it, applying a torque of 25-30N·m.
5. Recommended spark plug models: L6/L6RTC/BPMR6A.



Air Filter Maintenance

1. Open the Carb cover.
2. Remove the air filter cover.
3. Take out the filter element and clean it with a non-flammable or high flash point solvent, then allow the filter element to air dry.
4. Soak the filter element in clean engine oil and squeeze out any excess oil.
5. Reinstall the filter element and air filter cover.
6. Reinstall the machine observation window cover.





Precautions for Transporting

1. When transporting the Trash Vac, be sure to stop the engine.
2. Do not sit or stand on the Trash Vac, or place heavy objects on it, as this may damage the machine.
3. When moving, keep the Trash Vac in a horizontal position to prevent fuel from splashing out. The splashed fuel and vapor may ignite and cause a fire.

Machine Storage

1. Store the Trash Vac in a dry, dust-free, and well-ventilated indoor area that is out of reach of children.
2. Set the ignition switch to the off position.
3. Do not store the Trash Vac near open flames, sparks, or similar sources of ignition.
4. When preparing to store the Trash Vac for 30 days or more:
 - a. Empty the fuel tank by running the engine until it runs out of fuel and stops.
 - b. Thoroughly inspect and clean the Trash Vac .
 - c. Apply a small amount of rust preventive oil to all external metal surfaces.
 - d. After the engine has cooled down, remove the spark plug and pour a few drops of fresh, clean two-stroke engine oil into the cylinder. Pull the starter cord 2-3 times to distribute the oil inside the engine.
 - e. Reinstall the spark plug, but do not connect the spark plug cap.
5. Remove the intake pipe assembly.

**For God so loved the world,
that he gave his one and only
Son, that whoever believes in
him should not perish, but
have eternal life.**

JOHN 3:16

